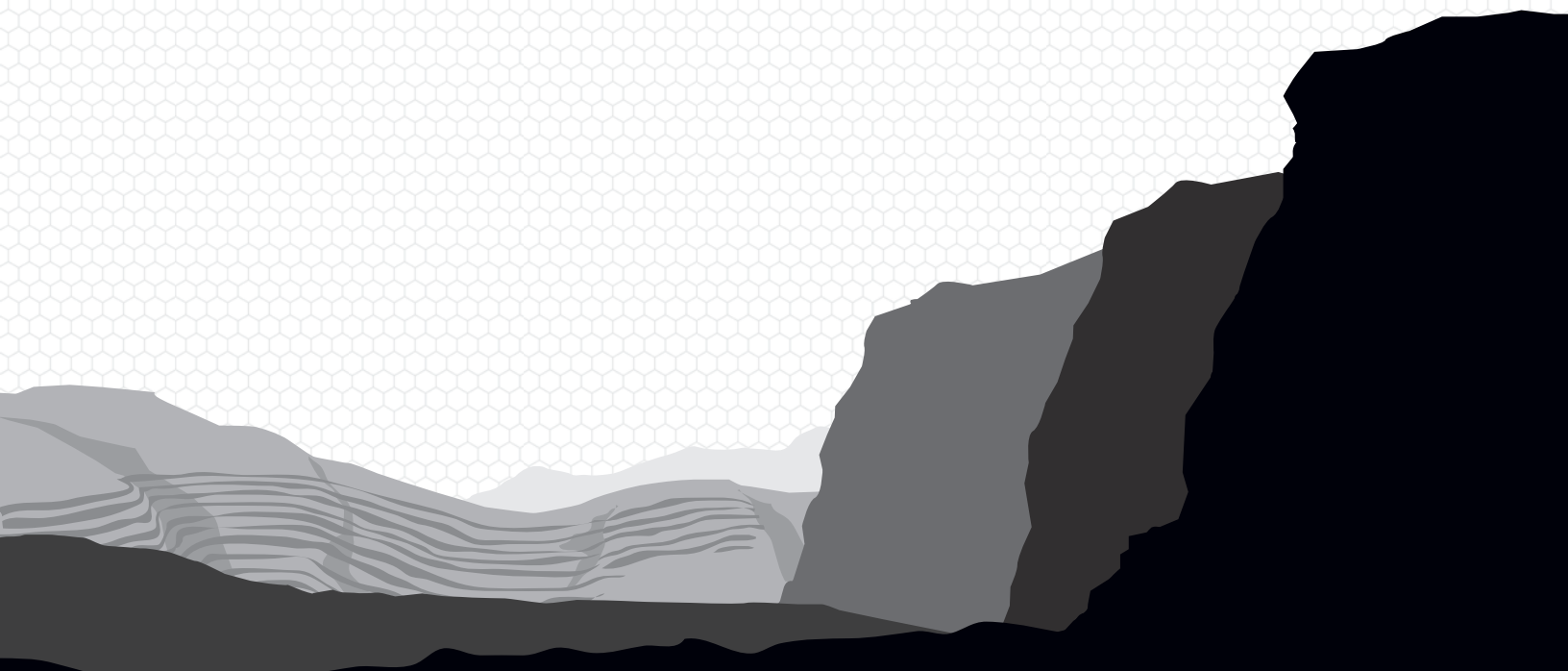


FACE PROFILER

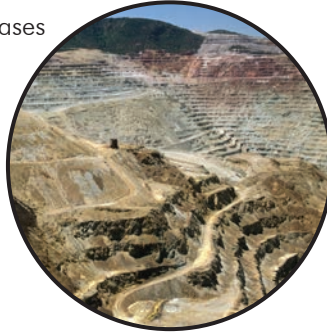
- + Overcoming Challenges
- + Complete Laser Packages
- + In-Field Calculations
- + Advanced Reporting



Overcoming Challenges

LTI's Face Profiler Field Software calculates bench heights, minimum and optimum burdens, drill hole angles and offsets, hole depths and more—all for the perfect blast!

- Reduces production delays and increases safety with a quick and easy system
- Accurately measures profiles to minimize fly rock and vibration
- Meets MSHA documentation requirements that can be printed in the field



Complete Laser Packages

Obtain highly accurate results in less time and for less money than any alternative measurement system on the market. These two lasers are extremely durable, rugged and waterproof.

TruPulse® 200X

Calculates horizontal distance, height and 2-D missing line values.

- Adjusts to varying light conditions with quality optics and in-scope LED display
- Achieves the highest distance and inclination accuracy
- Quickly measures bench heights and slope grades



TruPulse® 360 R°

Additionally measures azimuth and has an onboard 3-D missing line solution

- Performs quick compliance checks, such as heights, spans and clearances
- Integrates with GPS/GNSS solutions for asset mapping



ONE-PERSON OPERATION

Save time, money and resources with a system that can be operated safely by just one person.



TOUCH SCREEN ACTIVATION

Face Profiler software is easy to navigate with intuitive icons and simple taps on the screen.

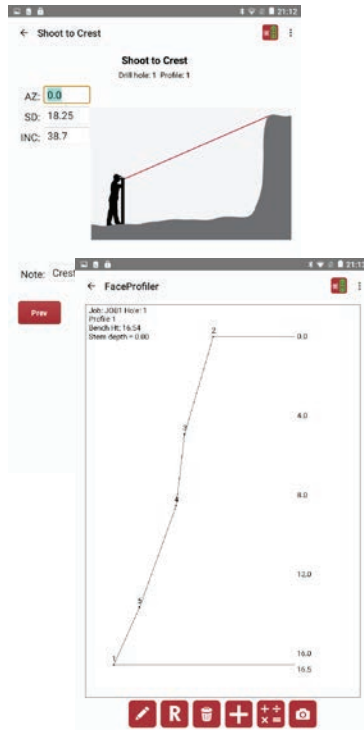


X, Y, Z COORDINATES

Using a TruPulse 360°/B/R with a built-in compass or a MapStar TruAngle establishes coordinates for your measurement origin.

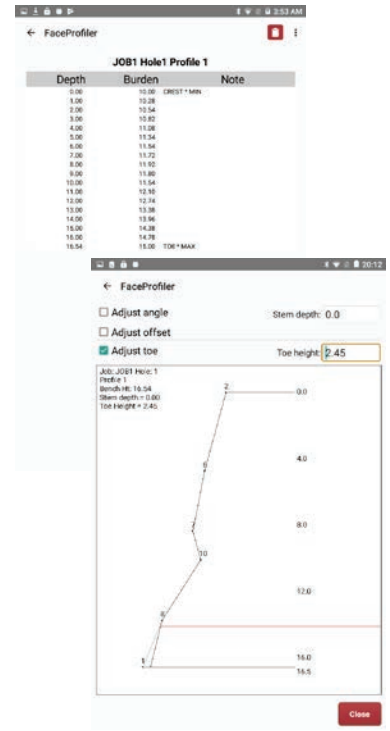
Interactive Profile Screen

- Tap anywhere in the profile to view depth and burden details
- Delete shots, edit the profile and measure to seams in the face
- Take a photo to enhance your profile data
- Accommodate for bench corners by shooting in multiple profiles per borehole



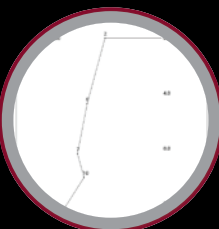
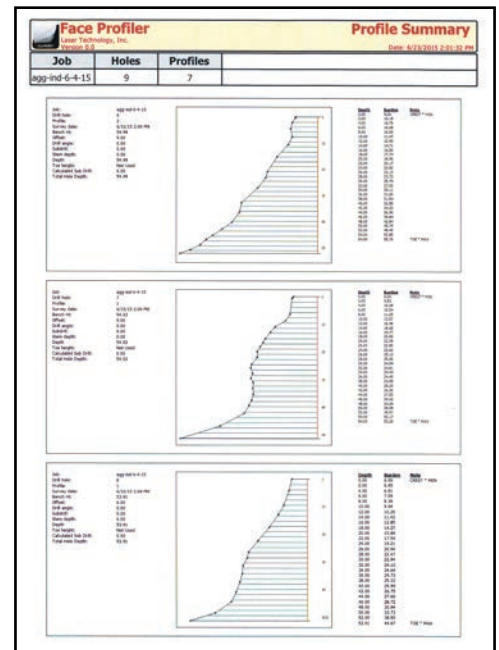
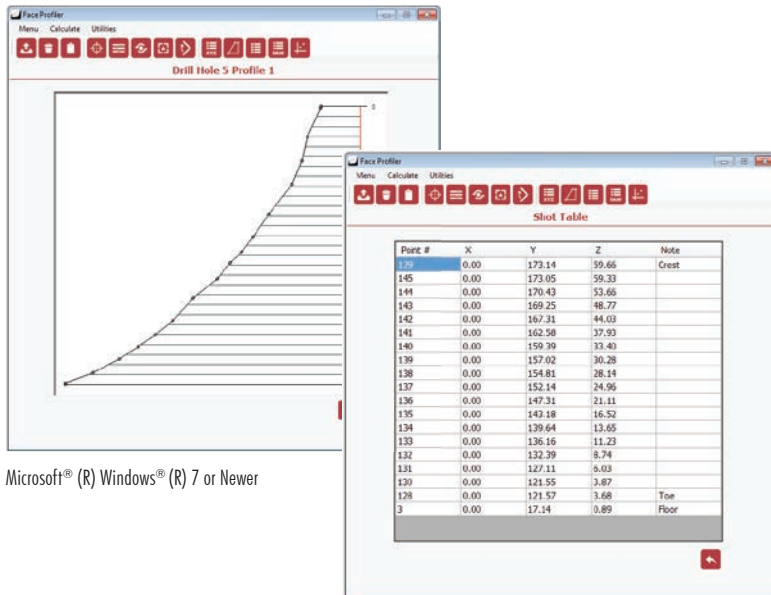
Calculations & Adjustments

- Remove slough at toe and overburden at crest from burden calculations
- Calculate burdens by entering the hole offset or by shooting in hole location
- Determine drill hole placement and angle for a specified minimum or optimum burden
- Reshoot the crest and toe shots at any time to adjust bench height



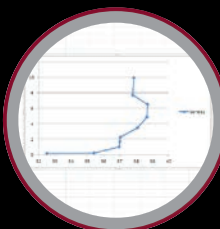
Optional Desktop Reporting

- Calculate, adjust and print reports in the field or with a larger view on your desktop
- Print multiple profiles per page, print a detailed list of all your profiles in a single job or print to PDF
- Review and edit depth and burden data or shot coordinates at any time



IN-FIELD CALCULATIONS

Instantly generate all the data you need in the field, without any post-processing on your desktop.



REPORTS

Create professional reports that meet MSHA requirements. Easily transfer your field data and export it all into Excel.



DATA COLLECTOR COMPATIBILITY

Works on any Android smart device, QVGA, or VGA Windows Mobile 6.0 or newer data collector.

Popular Hardware Packages

TruPulse® 360R + Tablet

TruPulse® 200X + Tablet



| | | |
|------------------------|---------------------|---------------------------|
| Range | 6,560 ft (2000 m) | 3,280 ft (1000 m) |
| Range Accuracy | ±3 ft (1 m) Typical | ±1 ft (30 cm) Typical |
| Inclination Accuracy | ± 0.25° Typical | ± 0.25° Typical |
| Power | CR123A | CR123A |
| Azimuth/Angle Accuracy | ±<0.5° RMS | AZ ± 1° Typical |
| Communication | Windows® + Android® | Windows® + iOS + Android® |

LTI Android Tablet

| | |
|-------------------|--------------------------------------|
| IP Rating | IP 67; Waterproof & Dust proof |
| Communication | Bluetooth®, WiFi, Cellular, and more |
| GPS | 3 to 16 ft (1 to 5 m) |
| Front/Rear Camera | 5.0 MP/16.0 MP |

Face Profiler on Android Specifications

| | |
|---------------------|--|
| Operating Systems | Android version 4.4 and later <small>*Also available for Windows® Mobile 6.0+ devices</small> |
| Connectivity | Bluetooth® |
| Compatible Lasers | TruPulse lasers with Bluetooth® |
| Supported Languages | English (a template is available for translation) |



© LTI 2019 1303 EN